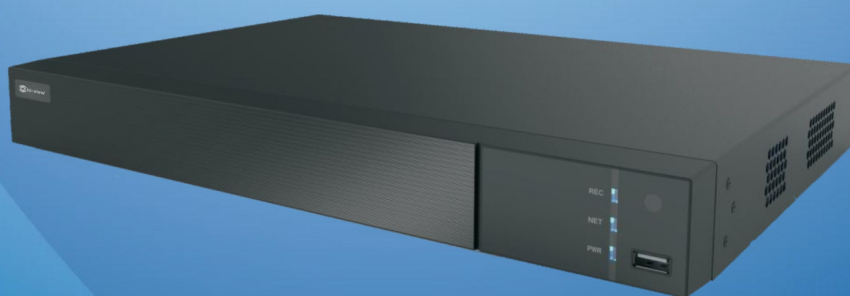


HP-9702D

Decoder



With the high-performance SOC decoding chip and stable and reliable Linux OS, HP-9702D can be excellently served the high-definition surveillance system. It not only supports multi-channel standard-definition and high-definition network videos decoded on video wall independently, but also it can be managed in an integrated way by video surveillance management platform. Moreover, it also has lots of advanced and convenient functions, such as H.264/H.265, device superior-subordinate management, window opening, roaming and so on. Therefore, this decoder can be widely used in banks, schools, intelligent buildings, transportation, environmental protection, supermarkets, gasoline stations, housing estates, factories, etc.

Features

Decoding & Display

- 2*HDMI@1080P; HDMI1 supports 4K
- Supports PS, RTP, TS, ES encapsulation formats (in platform running mode)
- Supports NTSC & PAL video formats
- H.265 HP/MP/BP and H.264 HP/MP/BP
- 4CH 8MP/5MP@30fps or 8CH 4MP/3MP@30fps or 16CH 1080P/720P@30fps or 34CH D1 or lower
- G.711A/G.711U audio compression
- 1CH audio input; 1CH audio output

Stream Mode

- A&V streams can be directly acquired from TVT IPC/DVR/NVR by SDK private protocol
- A&V streams can be acquired from NVMS platform or encoding devices by RTSP/ RTP protocol
- A&V streams can be acquired from IPC by ONVIF protocol Device Management
- Supports multi-level device control (master-slave mode)
- A maximum of 64 decoders can be manageable

Decoding Control

- Supports live view and playback decoding
- 1/4/9/16/25/36 screen display mode
- Window opening, roaming
- View cameras or camera groups in sequence

Access

- Provides HTTP API protocol for the third-party
- Supports platform running mode and device running mode

Operation and Maintenance

- Supports device search
- Supports WEB client access, configuration and management
- Supports time zone, time and date settings
- Supports data port and HTTP port settings
- Supports data backup and restoration
- Supports remote reboot and one-button reset
- Supports online and U-disk upgrade
- Supports dual gigabit Ethernet ports, load balancing

Specifications

Model	TD-1102D
Compression Format	H.265/H.264
Operating System	Embedded Linux
Video Output	HDMI × 2 HDMI1: 3840×2160/1920×1080/1280×1024 HDMI2: 1920×1080/1280×1024
Decoding Resolution	8MP/5MP/4MP/3MP/1080P/960P/720P/WD1/D1/CIF
Decoding Capability	4CH 8MP/5MP@30fps or 8CH 4MP/3MP@30fps or 16CH 1080P/720P@30fps or 34CH D1 or lower
Frame rate	1-25FPS/CH (PAL), 1-30FPS/CH (NTSC)
Screen display mode	1/4/9/16/25/36
Audio interface	Audio input × 1, Audio output × 1, support two-way talk
Network interface	RJ45 × 2, load balancing and hot spare
Alarm interface	Alarm input × 8, Alarm output × 4
USB interface	USB3.0 × 1, USB2.0 × 2
Power Supply	DC12V
Temperature	-20°C ~ 50°C
Dimensions (mm)	380 (W) × 268 (D) × 45(H)

Dimensions

Unit: mm

